

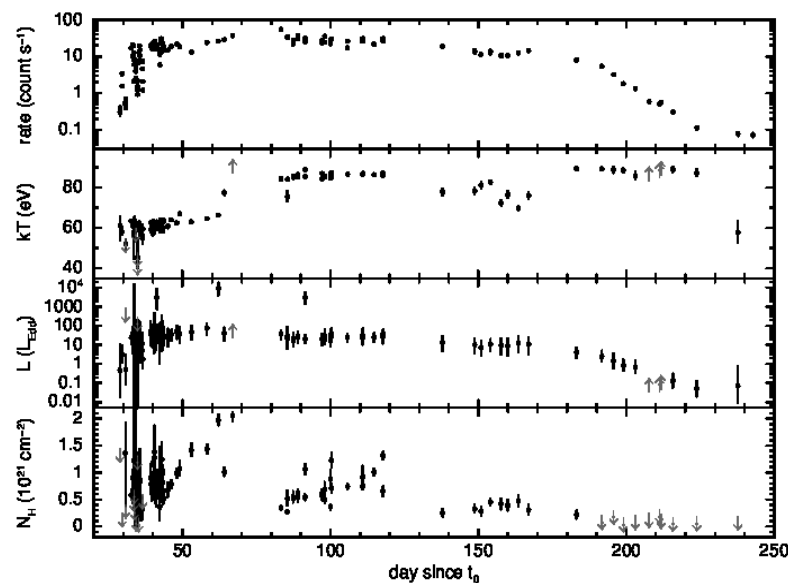
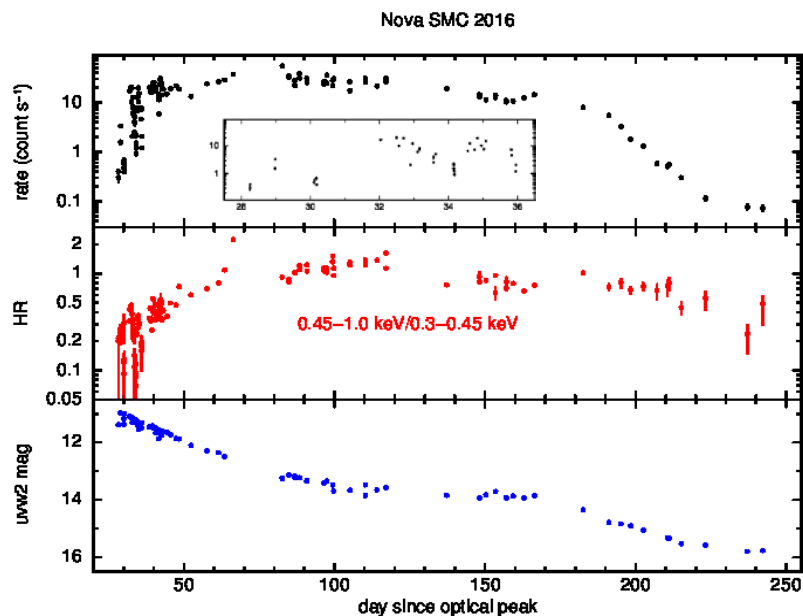
# Recent Highlights of Swift Observations of Novae

Kim Page  
(on behalf of the Swift Nova-CV  
group)

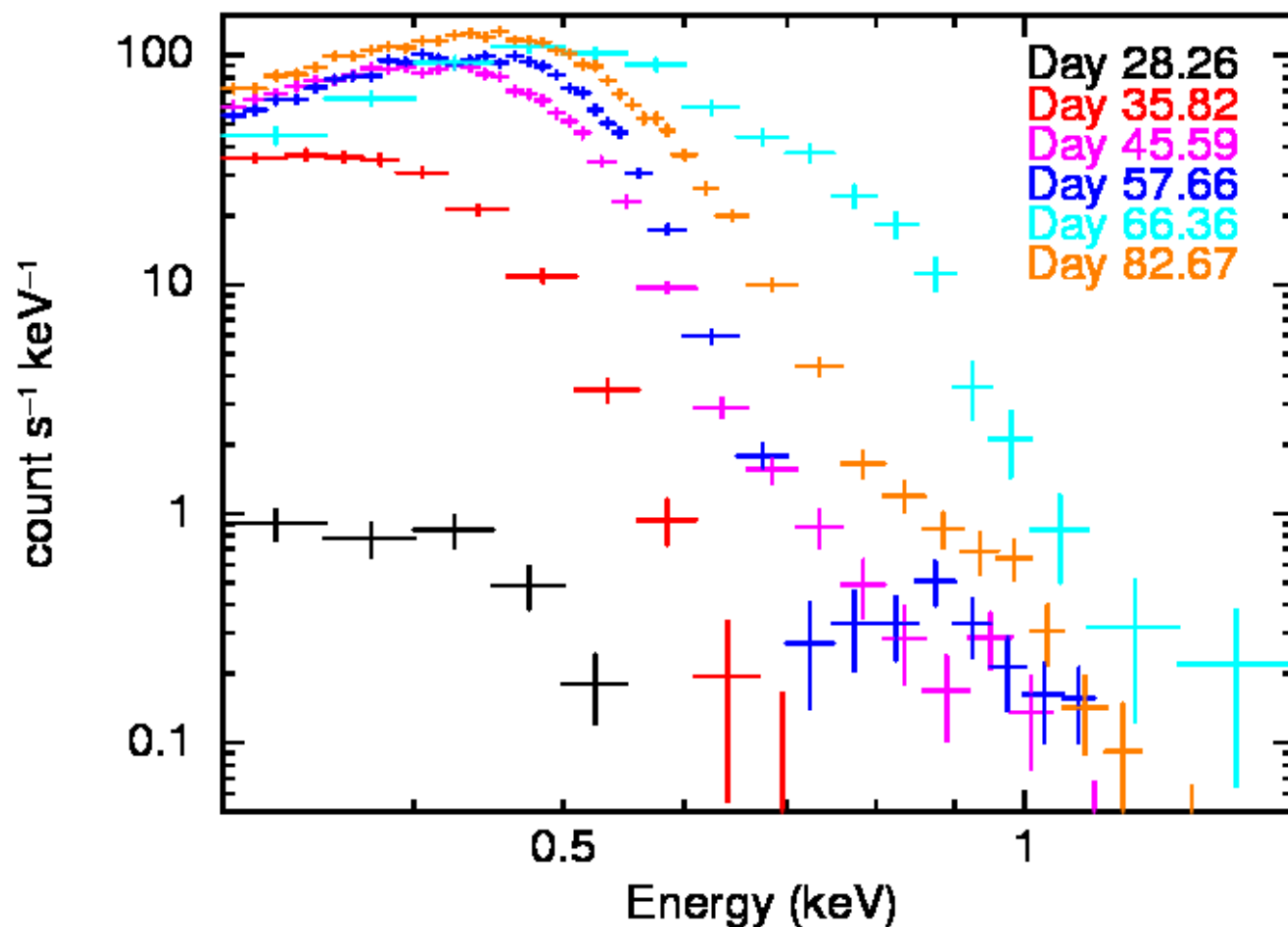


# Nova SMC 2016

Discovered in October last year by the MASTER team. This is the first nova discovered in the SMC since 2012 (which was also observed by Swift; much fainter). Swift observations started about a day after the discovery (though there were then “pre-discovery” observations reported).

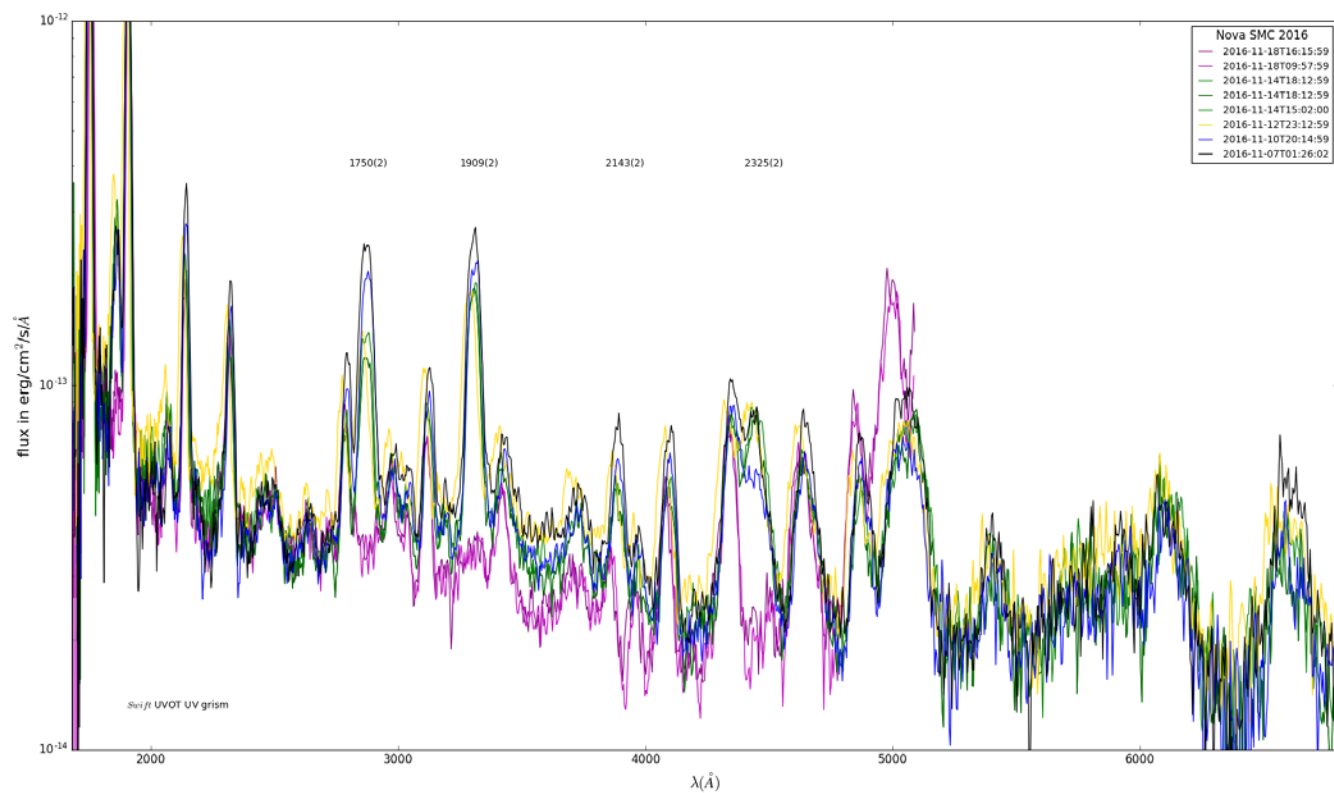


# Nova SMC 2016

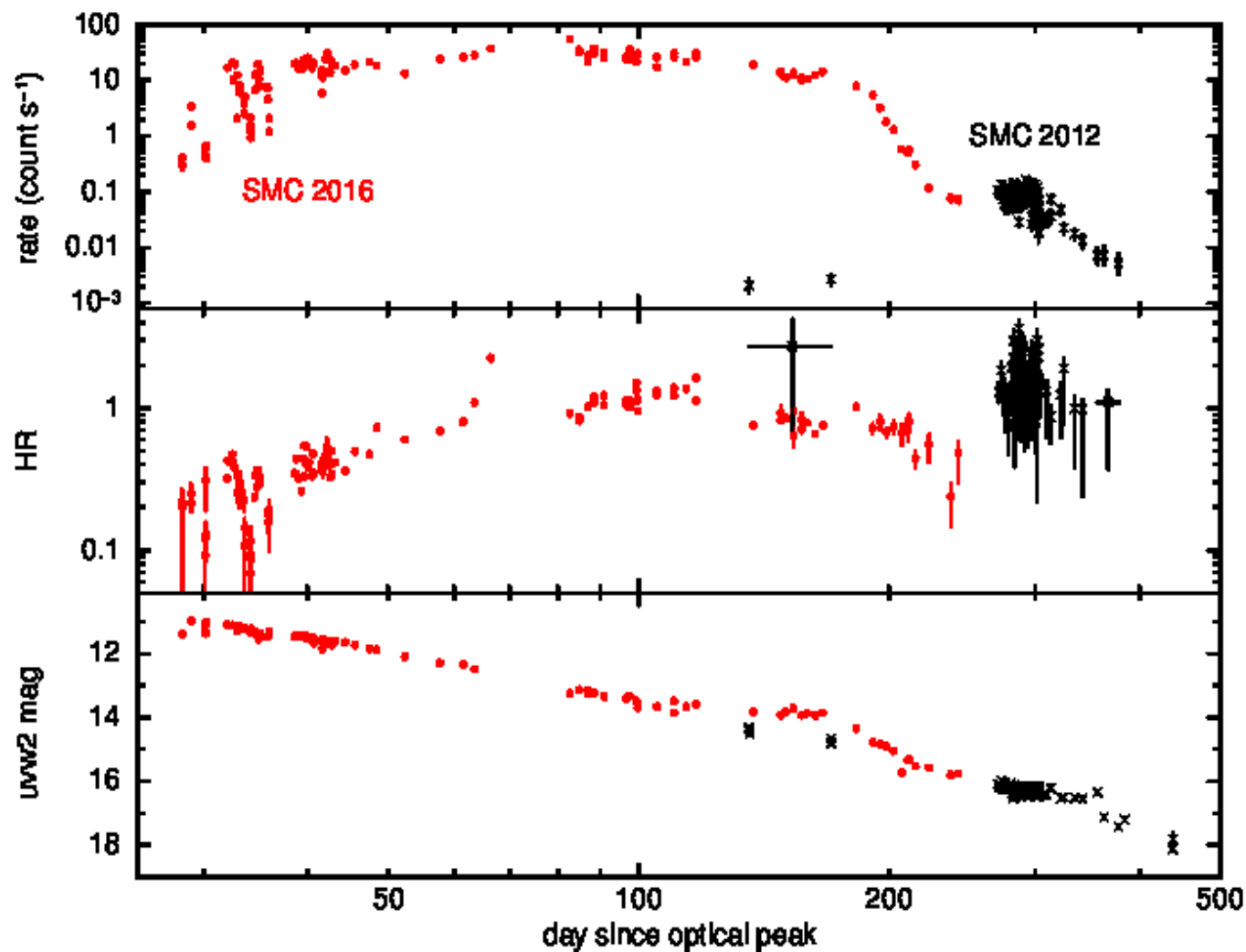




# Nova SMC 2016

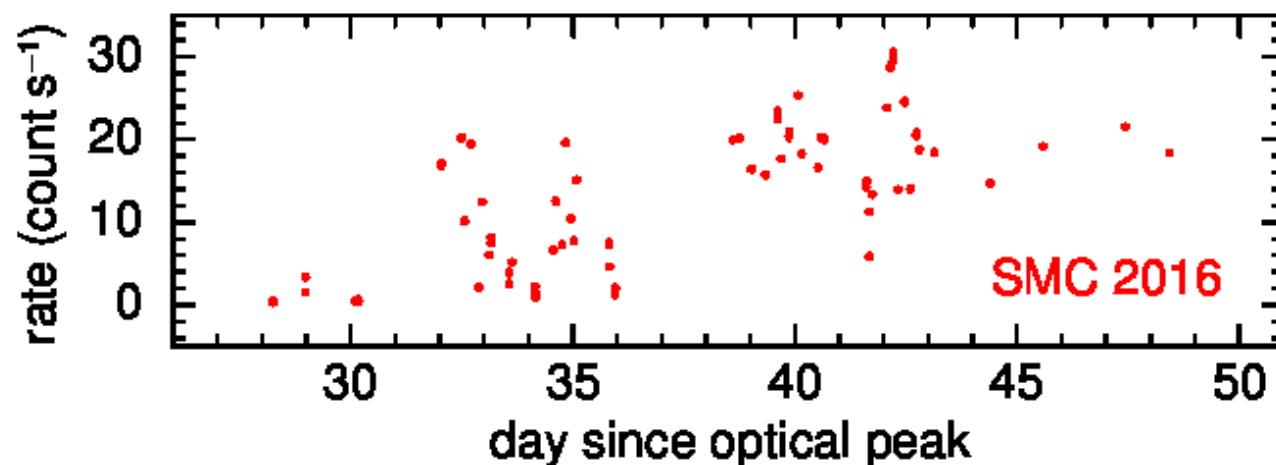
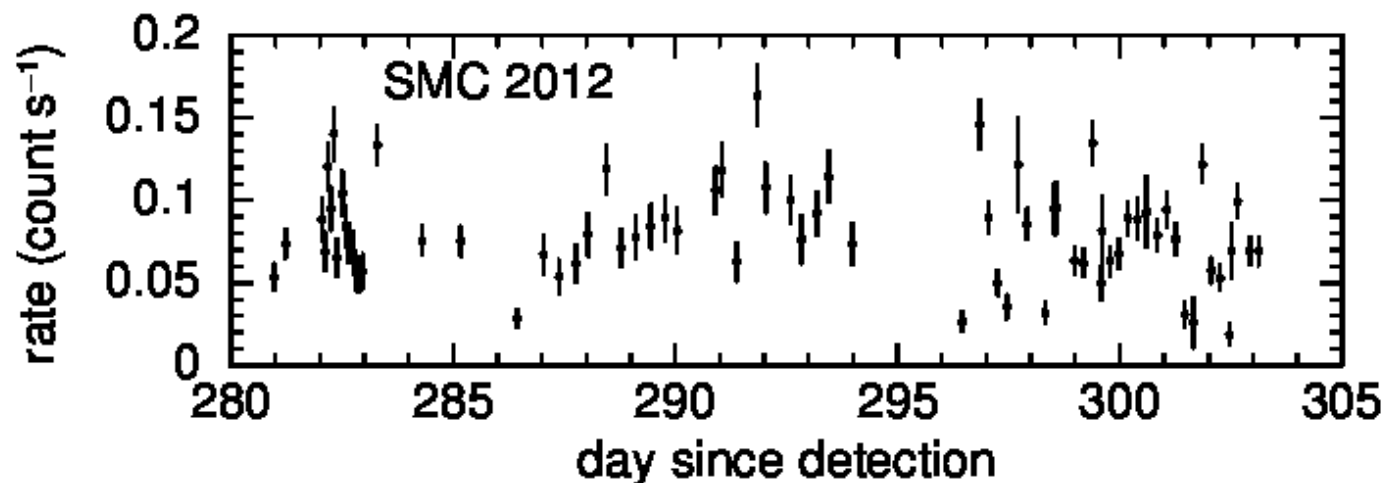


# Nova SMC 2016 vs 2012





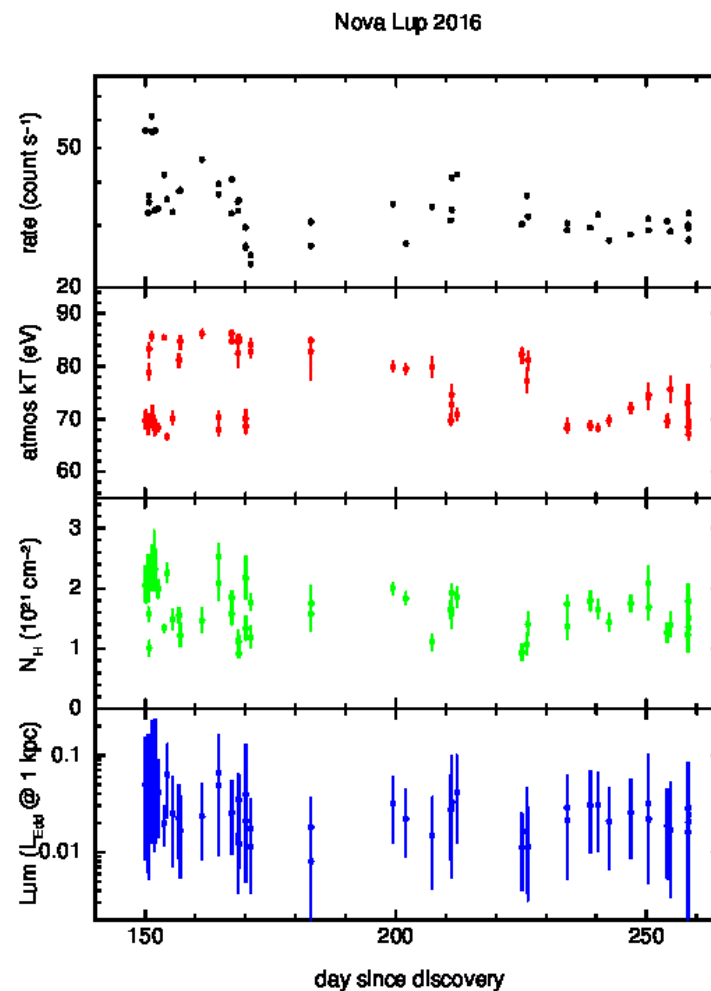
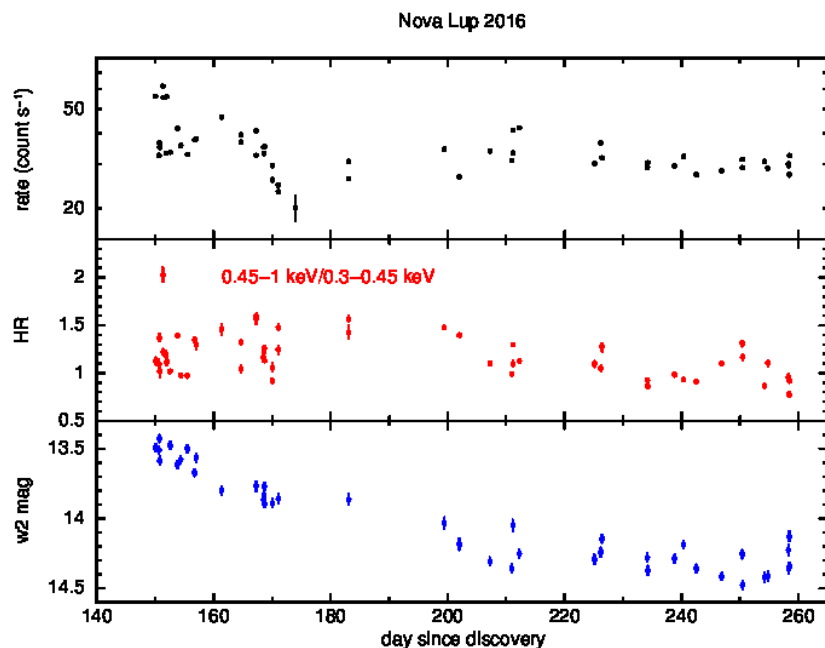
# Nova SMC 2016 vs 2012





# ASASSN-16kt/Nova Lup 2016/V407 Lup

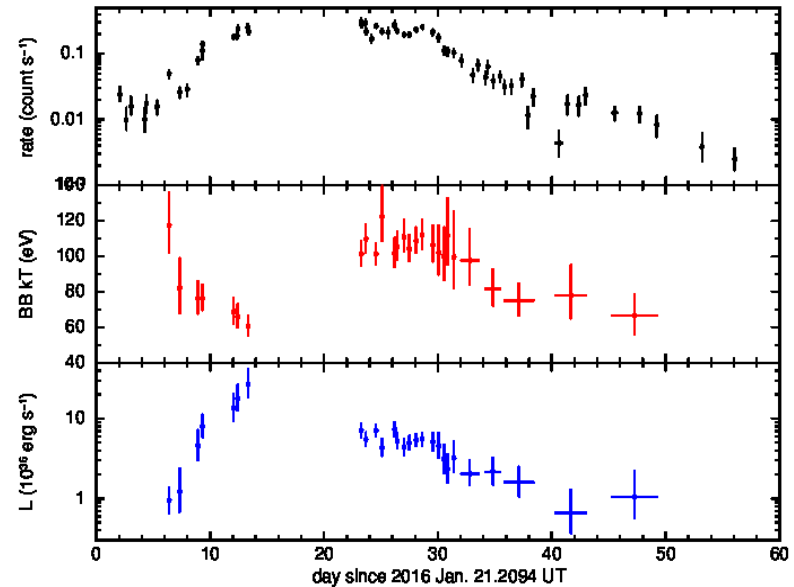
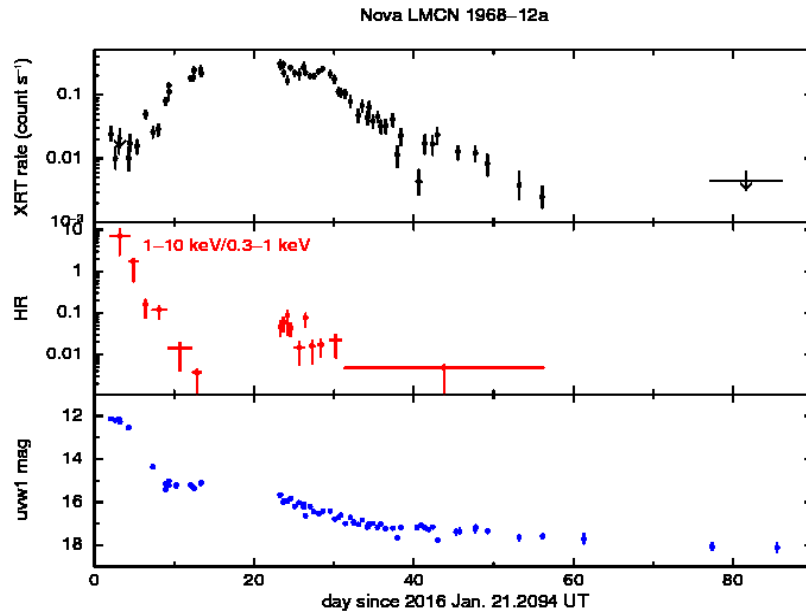
Discovered in September 2016.  
Swift observations started 2 days after  
discovery. Went into Sun constraint about 3  
weeks later – no definitive detection before  
then.





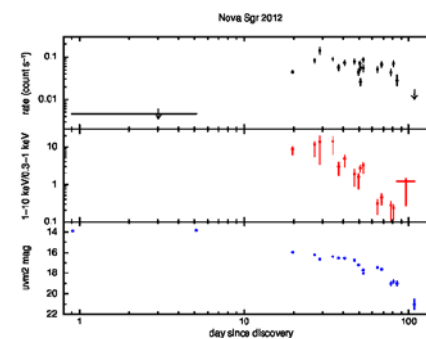
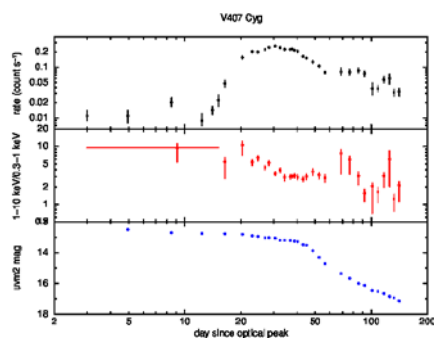
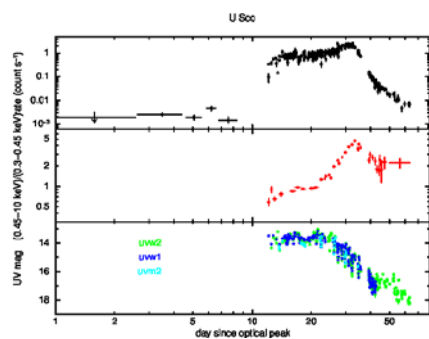
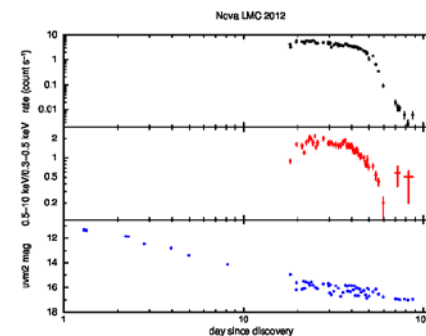
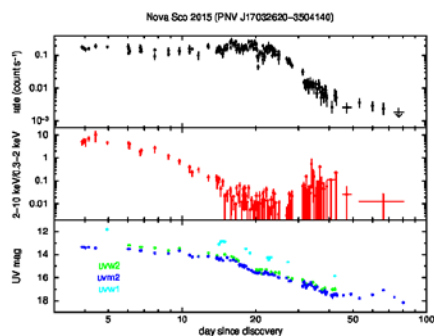
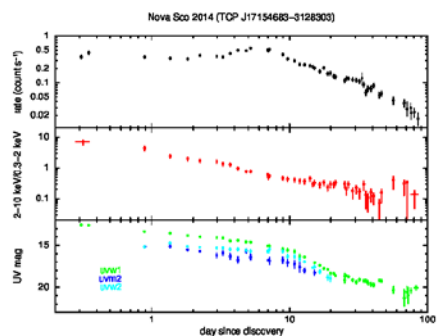
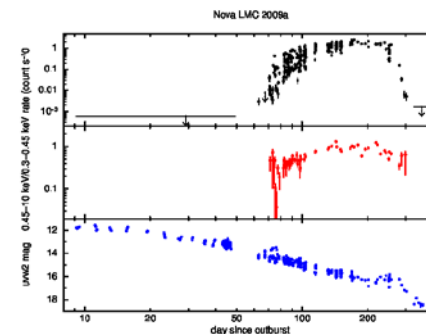
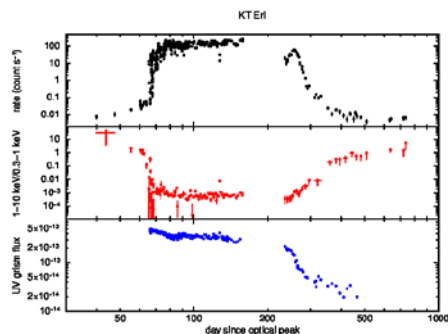
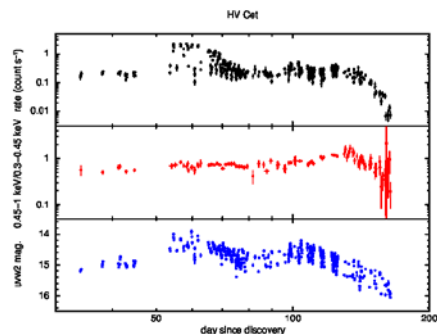
# Nova LMC 1968-12a (Recurrent)

Recurrent nova (5 known outbursts), most recently in January 2016.  
Swift observations started 2 days after discovery.





# SSS sample



# SSS sample

